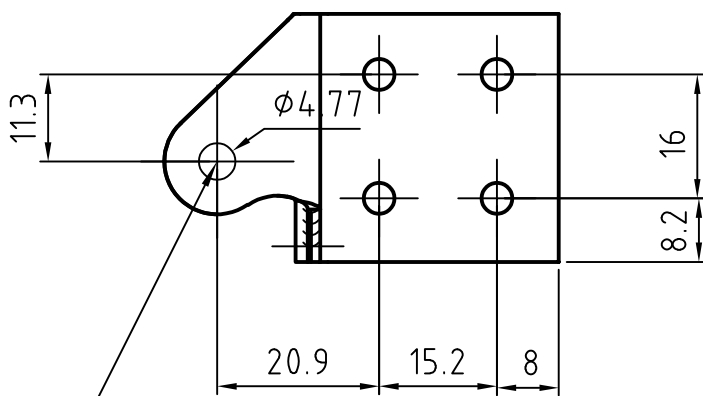
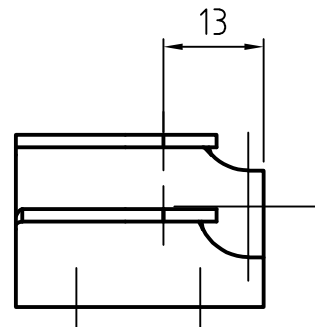
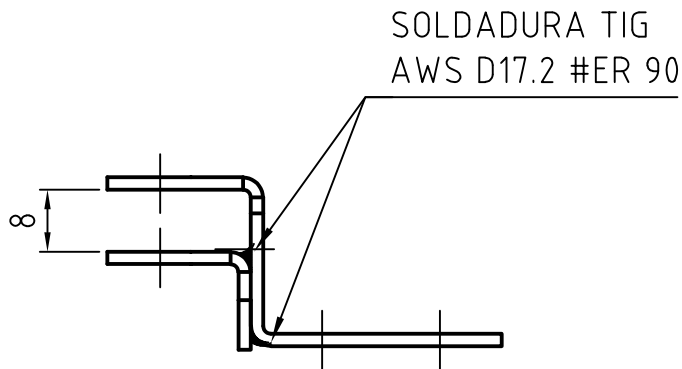
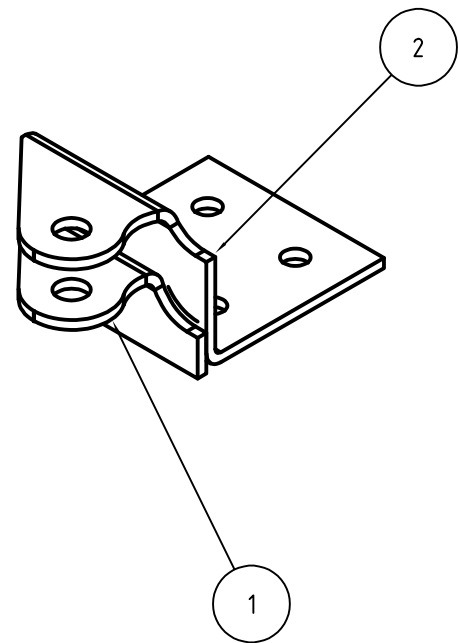



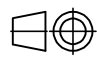
B

A



Agujerear con 3/16"
y llevar a medida con
calisuar



| 2 | 1 | PIEZA 2 SOPORTE | 05XQ6301-2 | SAE 4130 N .063" |
|---|---|--|-------------|--|
| 1 | 1 | PIEZA 1 SOPORTE | 05XQ6301-1 | SAE 4130 N .063" |
| Item | Cant | Descripción | Aravia P/N | Material |
| APROBACIÓN ANALÍTICA DNA N° | Dib. | Fecha | Nombre |  ArAvia S.A. Ruta Nro. 8 Km. 378,1 / Dorrego N° 651 Venado Tuerto (2600) Santa Fe, Argentina Tel. +54 3462 432540 Fax. +54 3462 438344 |
| | Rev. | 29/12/12 | Montiel C. | |
| | Apr. | 29/12/12 | Giordana G. | |
| | Esc. | | | |
| MATERIAL: SAE 4130 N 0.050" | 1 : 1 | SOPORTE BBA FRENO CESSNA AG WAGON | | Plantilla de corte laser |
| Trat Termico: Normalizado d/corte |  | | | No de Plano: 1613254-1-AR |
| | Tolerancia: Ver detalles | | | Revisión N°: 0 |
| | Rugosid.: S/R | | | Fecha de emisión: 29-12-12 |
| | | | | Reemp. a: |

B

A